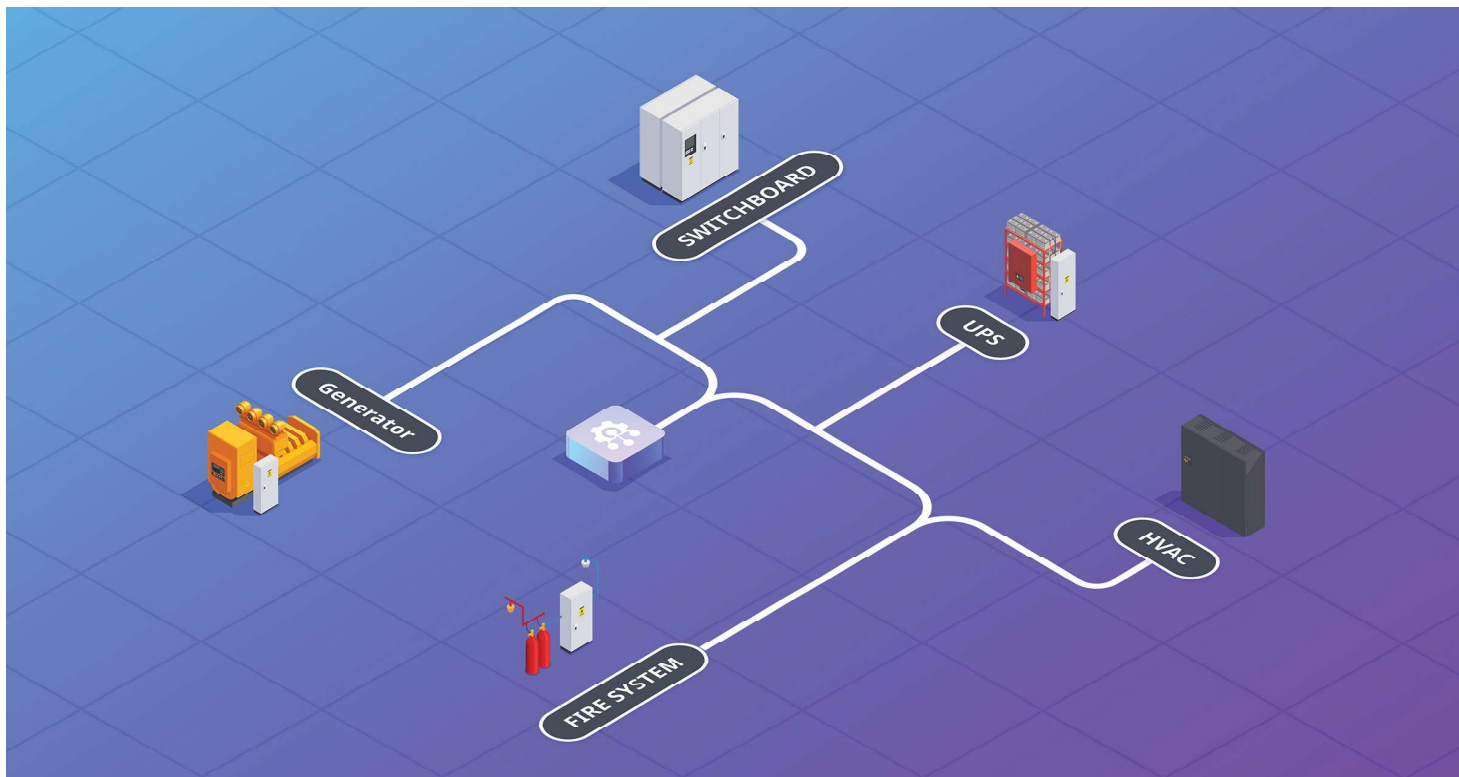


# Revolutionizing Healthcare Facility Operations with Data-Driven Solutions



## Elevate Your Systems with Secure and Advanced Monitoring, Control & Analytics Solutions

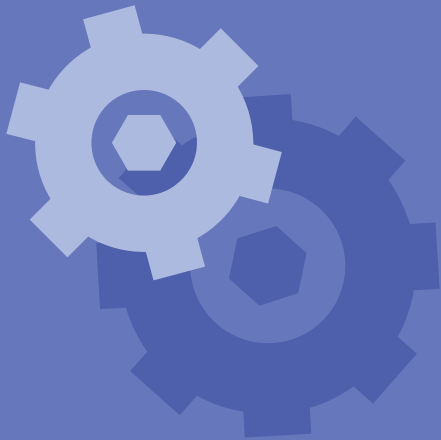
At ControlCom Technologies, LLC, we specialize in creating cutting-edge industrial control solutions tailored to enhance efficiency and drive success.

# Engineering Solutions

We are not just engineers. We are integrators of innovation

## Addressing the Industry Challenge

Today's industrial landscape is marked by a significant challenge: system fragmentation. Companies often find themselves juggling multiple vendors and systems to access and interpret data from their equipment. This fragmented approach leads to inefficiencies, increased vendor costs, and a higher potential for errors.



## How We Solve This Challenge

ControlCom Technologies tackles this challenge with a holistic approach. We provide end-to-end solutions encompassing on-premises controls, HMI systems and the ControlCom Connect™ platform, backed by our robust engineering services. This comprehensive approach allows for seamless communication between all components of your industrial systems, eliminating the need for multiple vendors and simplifying the overall management process.

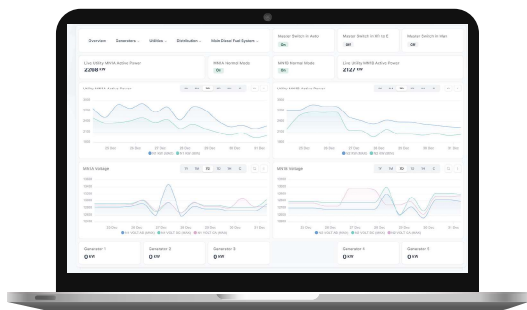
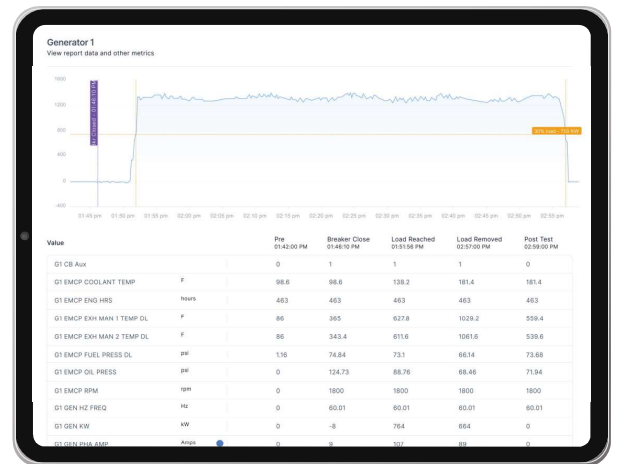
## Modernization

Our engineering expertise is the foundation of our comprehensive services, ensuring that every solution is precisely designed for optimal performance and longevity. We build engineering solutions to support field devices, ensuring seamless integration and enhanced functionality.

# Software Solutions with value

## Compliant Generator Reporting

Our advanced reporting tools ensure healthcare organizations can effortlessly demonstrate compliance with healthcare regulations, promoting a safe, efficient, and regulatory-compliant operational environment. This data is crucial for maintaining accreditation and fostering a culture of quality and safety within healthcare facilities.



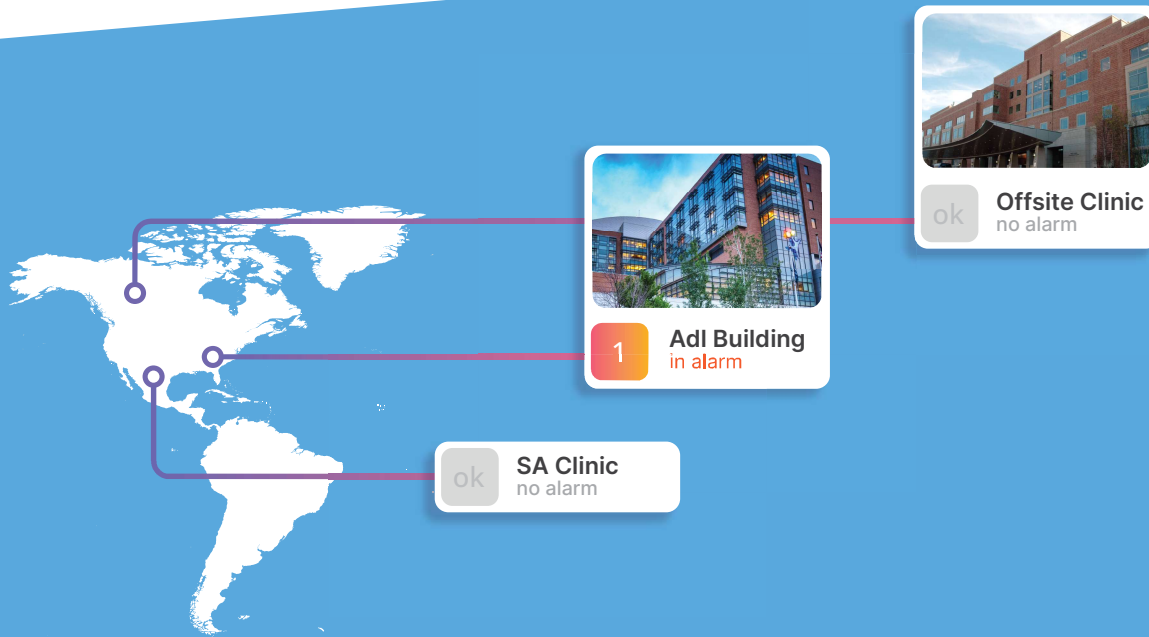
## Real-Time Data & Alerting

Enables real-time data viewing, ensuring immediate visibility into device performance. We also provide notifications through text or email alerts, allowing for prompt decision-making and action. This seamless integration of remote monitoring, real-time data access, and instant notifications ensures that you can maintain optimal operations and respond to any issues quickly.

## Flexibility for Business and Operations

Customizable dashboard feature that empowers users to tailor their data visualization according to their specific needs. With a drag and drop interface, you can easily create and modify dashboards.

Learn more at <https://www.controlcomtech.com/iiot-overview>



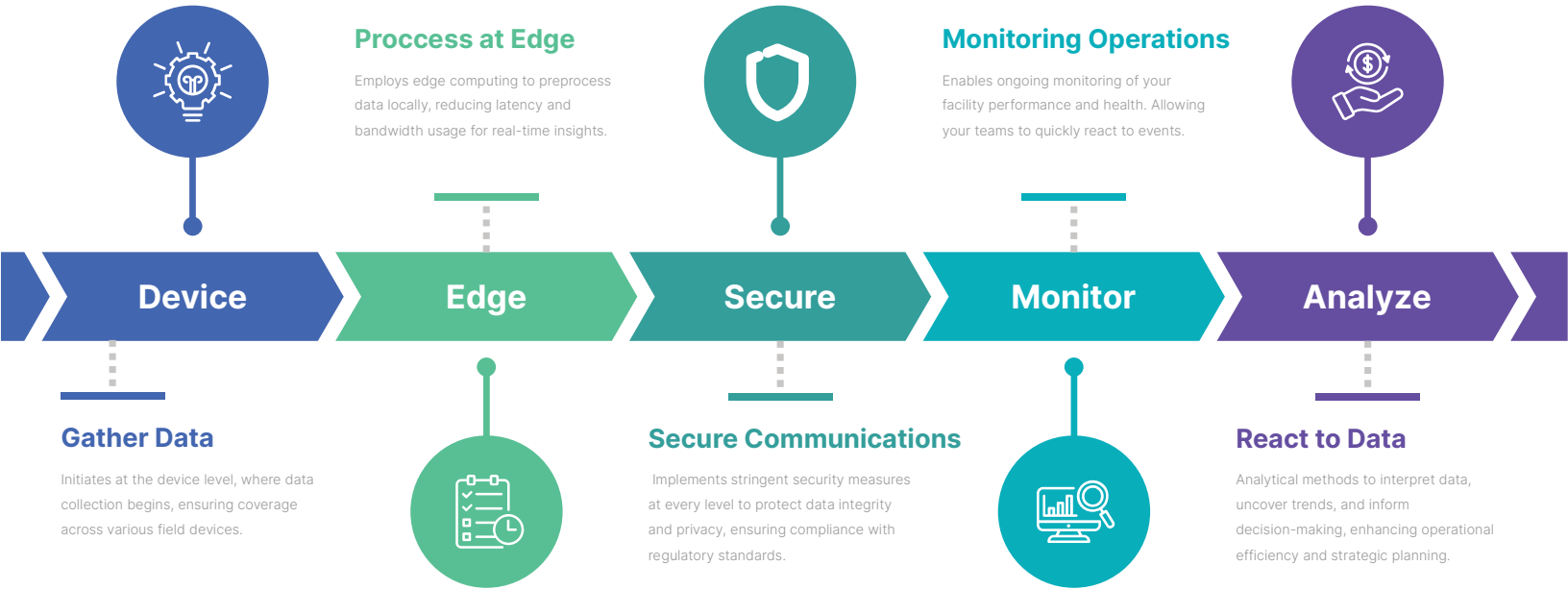
## Oversee Multiple Healthcare Facilities from a Single Point

In today's fast-paced and technologically advanced healthcare environment, the ability to monitor everything from a single location is not just an advantage; it's a necessity. Our integrated monitoring solutions empower facility managers, operators or operational stakeholders to oversee all critical aspects of their healthcare infrastructure from one centralized dashboard.

By consolidating data streams into one intuitive interface, we streamline the complexity of managing multiple systems, making it easier to maintain optimal conditions, enhance patient safety, and achieve unprecedented levels of operational efficiency and reliability across your entire healthcare facility.

# Your Data Journey

Secure, Analyze, and Discover



## Security is Paramount

At ControlCom Technologies, we place the highest importance on the security of your data. Leveraging Mutual TLS (mTLS), we ensure that all data transmitted between your devices and our platform is securely encrypted, preventing unauthorized access during transmission. Furthermore, our encryption protocols extend to data at rest, guaranteeing that your information remains protected while stored on our systems. This dual-layered approach to security underscores our commitment to safeguarding your operational and sensitive data against emerging threats.

Understanding the criticality of data privacy in today's digital landscape, ControlCom Technologies adheres to a strict policy of data ownership and confidentiality. Your data is unequivocally your own and is treated with respect for privacy. This principle not only reflects our dedication to security but also our respect for your proprietary information, ensuring that your operational insights remain exclusive to your organization.

# Customer Stories

We focus on healthcare

## How Our Platform Detects, Alerts, and Reduces Costs

A hospital system in Florida benefited significantly when an unexpected inrush of current was detected in their equipment. Our system identified the issue with the data integrity and promptly alerted the facility. This intervention allowed the hospital to replace the faulty equipment, resulting in substantial cost savings. By averting the utility surcharge associated with the equipment malfunction.

---

## Precision Reporting for Seamless Discovery

In an incident with a customer facing an unexplained outage, the challenge was compounded by the lack of synchronized time across equipment and the absence of data capture by local devices. Our platform was instrumental in resolving this issue by providing a whole plant view report. These reports detailed the timeline of the outage, including the activation of generators, the period during which power relied on emergency generators, and the restoration of utility services. This capability enabled stakeholders to pinpoint the outage's cause and timing, showcasing the system's value in crisis management and operational recovery.

---

## Work with Us

We're open to exploring how our expertise can address your unique requirements. Let's start a conversation and unlock potential solutions together.